



Utilizing the GP Information Tool

Megan De Freitas - 2024-12-03 - Setup

Overview

The GP Information Tool is a simple and easy-to-use tool that quickly gathers important Dynamics GP configuration data. The GP Information Tool looks at your Dynamics GP database, then it organizes a large amount of configuration data and displays it in an easy-to-read format (*this does not include transactional data, only configuration data, ie; GP Version, SQL Server Version, Document Types, Allocation & Fulfillment Methods, etc.*).

Note: This tool does not store any of the data it displays

This information will allow SalesPad staff to better understand your current environment so they can provide the best advice to get the most value out of SalesPad software.

Download the application [here](#)

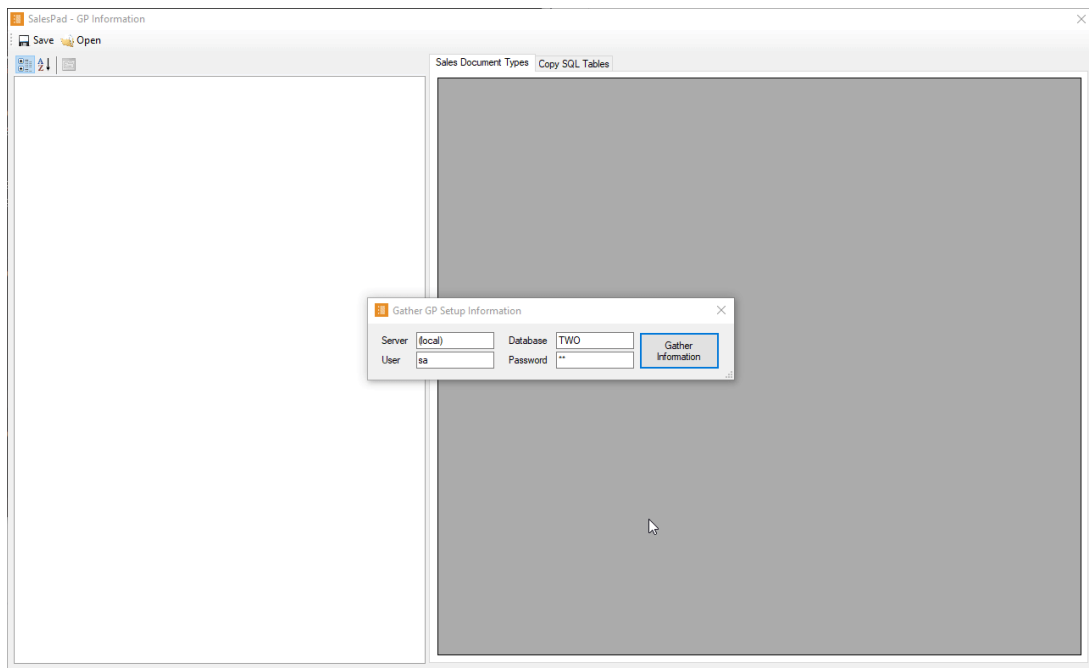
Setup

To run the GP Information Tool, please go through each of the following steps exactly as they are listed:

- Launch the GP Information Tool application
- Click Yes on the 'Information Source' popup
- Fill in all of the fields on the 'Gather GP Setup Information' popup (*see table below*)

Server	Server name
Database	GP Company database
User	SQL 'System Admin' Username
Password	SQL 'System Admin' Password

- Once all of the information has been filled in, click [Gather Information](#)
- Click the [A/Z](#) button at the top (*doing so will remove the section headers, and display all of the data in a single-page list*)



If you've followed all of these steps, you should end up with a screen similar to what is shown in the gif above.

The only thing left to do is take a screenshot of this window, then send it to the SalesPad resource that you are working with!