



Knowledgebase > SalesPad > Sales > Shipping Weight

Shipping Weight

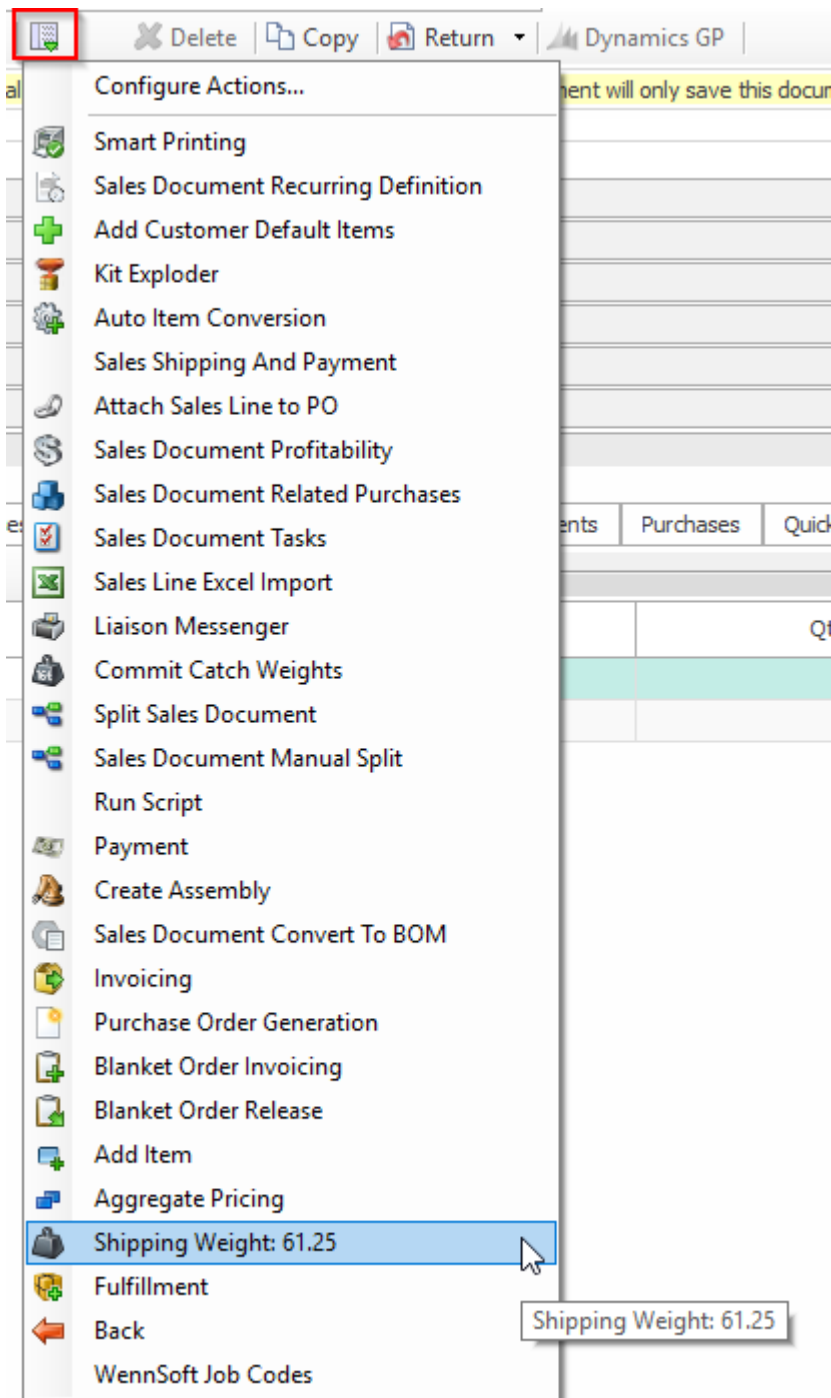
Megan De Freitas - 2024-11-22 - Sales

Overview

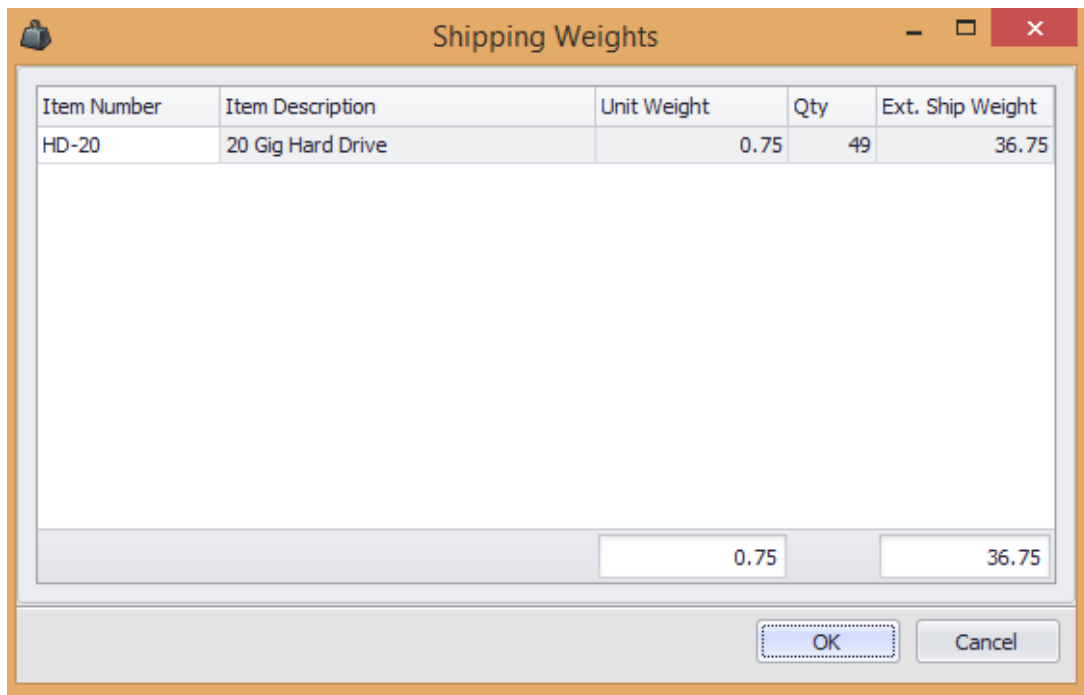
The Shipping Weight plugin shows a breakdown of the shipping weight per item and the total shipping weight for an order, which can be used to quote shipping cost. By default, item shipping weight data are populated from the GP shipping weight field, but if desired, a user defined field can be created to store this data.

Use

On a sales document or PO, click the **Actions** dropdown and find Shipping Weight in the list. Notice that the total shipping weight number may appear.



Select Shipping Weight and the Shipping Weights screen appears, displaying each line item along with its unit weight and quantity, and a calculated Extended Ship weight based on the unit weight and quantity. A document total weight is calculated on the bottom.



The image shows a software dialog box titled "Shipping Weights". It features a table with the following data:

Item Number	Item Description	Unit Weight	Qty	Ext. Ship Weight
HD-20	20 Gig Hard Drive	0.75	49	36.75

Below the table, there are two input fields: one containing "0.75" and another containing "36.75". At the bottom right, there are "OK" and "Cancel" buttons.

Click **OK** to return to the document.

Security

Sales Document Shipping Weight - Activates the Shipping Weight plugin on Sales Documents.

Purchase Order Shipping Weight - Activates the Shipping Weight plugin on Sales Documents.

Note: You must log out and log back in for security changes to take effect.

Settings

Sales Document Shipping Weight Field - Determines the Item Master field that is used to calculate the order weight