



SalesPad Mobile System Log Search

Megan De Freitas - 2024-11-22 - Miscellaneous

Overview

System Log Search allows users to look through the system log. Users can customize how results are drawn and what information is displayed. This document will teach you how to access System Log Search, use the search function, copy system log entries, and export a search.

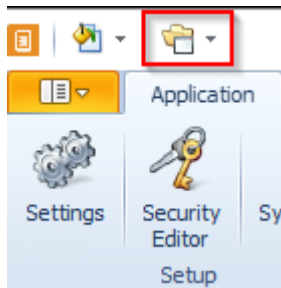
Table of Contents

- [Overview](#)
- [System Log Search](#)
 - [Accessing System Log Search](#)
 - [Using the Search Bar](#)
 - [Copying a System Log Entry](#)
 - [Exporting System Log Search Results](#)
- [Security](#)

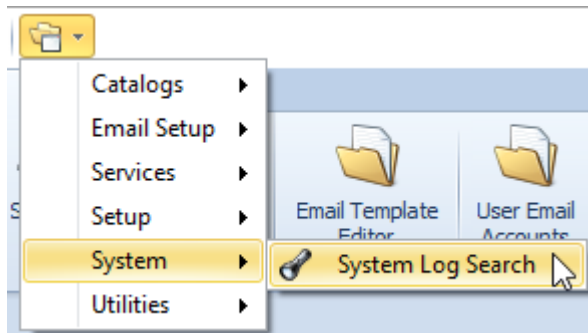
System Log Search

Accessing System Log Search

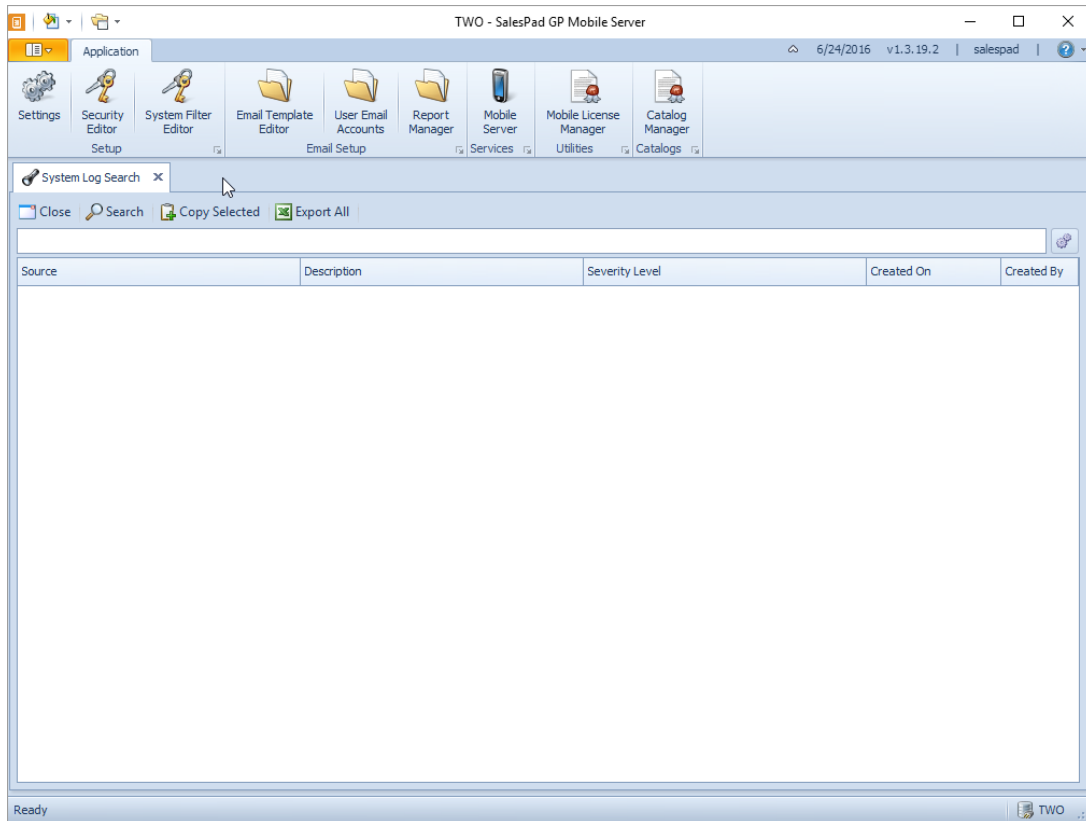
In Mobile Server, go to the folder in the bar on the top left of the screen.



Click on this folder to access a dropdown menu, then go into System, and from that menu select System Log Search.



This will open the System Log Search module.

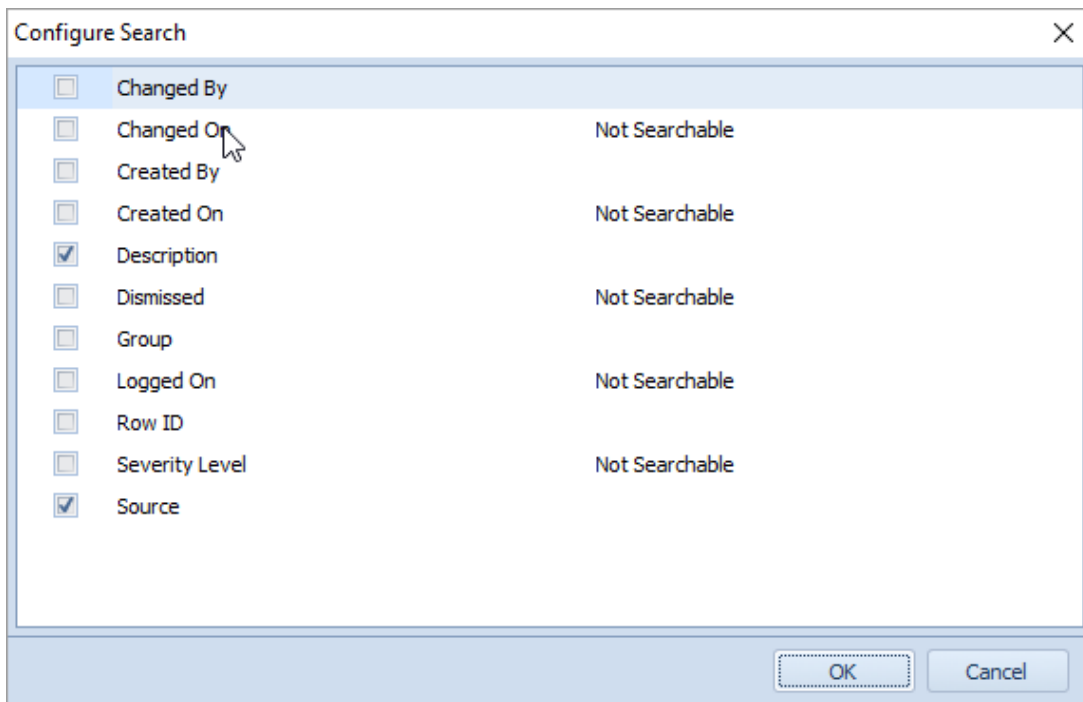


Using the Search Bar

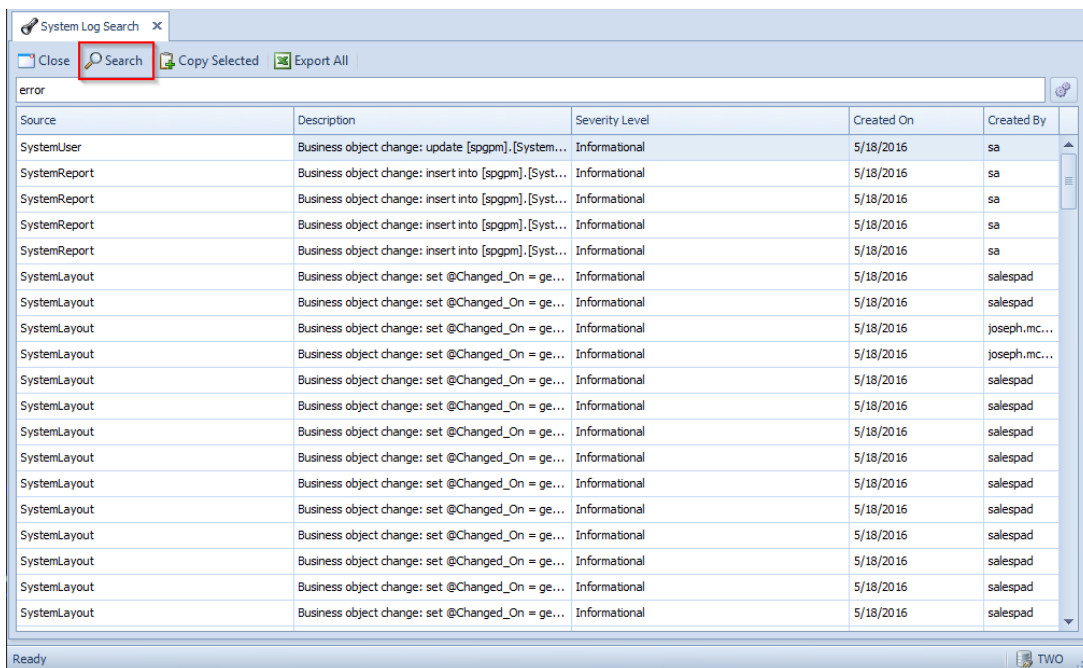
The search bar for System Log Search uses text input to look through system log entries for matching text. To use the search bar, click in the white space and enter your search criteria.



Once you've performed your initial search, click the gears to the right of the search bar to access the Configure Search window. Here, you can specify which fields your search affects. Click the check box next to the field(s) you want to use for your search, then click **OK** to save the changes.

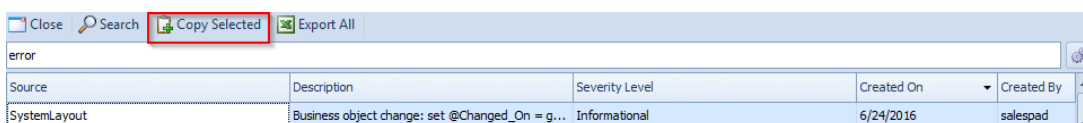


After your desired search settings are in place, click the **Search** button to complete the action. There will be a list of system log entries that match your search.



Copying a System Log Entry

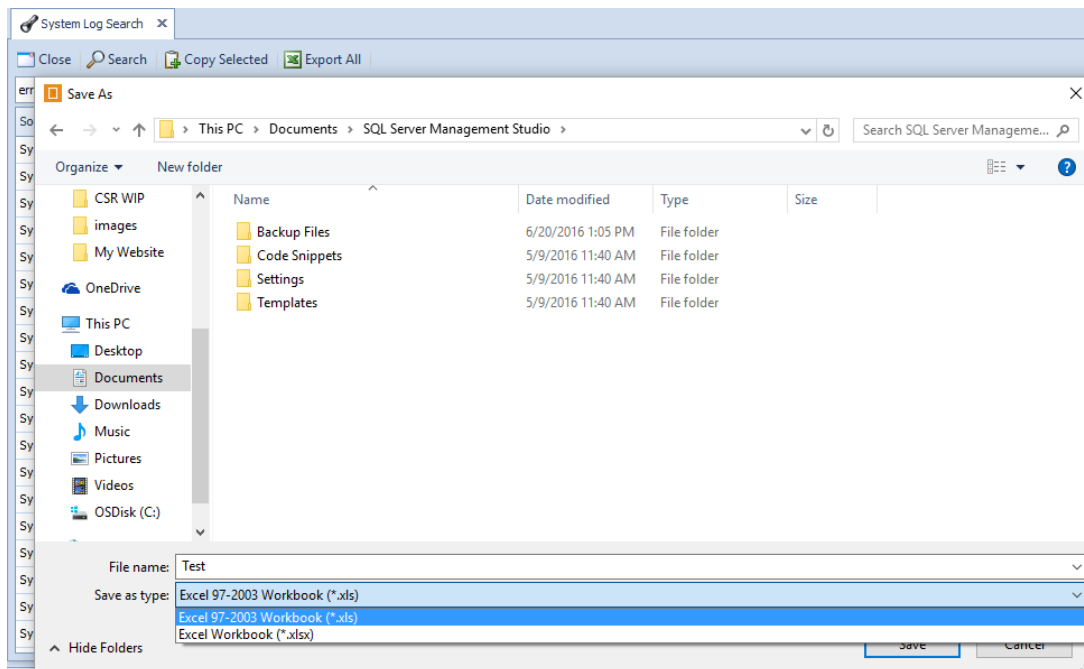
Select the target System Log Entry by clicking on it in the list, then click the **Copy Selected** button.



This System Log Entry will be copied onto the clipboard so that it can be pasted elsewhere.

Exporting System Log Search Results

Click the **Export All** button. A directory window will pop up, asking you where and how to save it. Export files can be saved as either .xls or .xlsx.



Security

System Log Search - Allows users to access System Log Search.