



Quick Report User Field Dropdowns

Megan De Freitas - 2024-11-22 - Reporting

Overview

In SalesPad it is possible to populate a list of options for a user defined field using a modified version of a SalesPad Quick Report. The dropdown can either pull from a static table or pull dynamically based off of screen values.

Setup

In the User Field Editor, create a new user defined field. Set an appropriate type and length for the new user defined field (you can use this on any type, just make sure your sql returns the same results, i.e. char to text, int to int, etc.).

Once the field is created, add the Quick report to the Quick Report field.

Field Properties

Table Name: Sales Line Item

Field Name: xSerialNumber

Map To: [Dropdown] [X]

Screen Label: Serial Number

Field Type: Text [Dropdown] Length: 150 [Spinner]

Default Value: [Text Box]

Value Options: [Dropdown]

Options

Field is Read Only Field is Required (Returns Only)

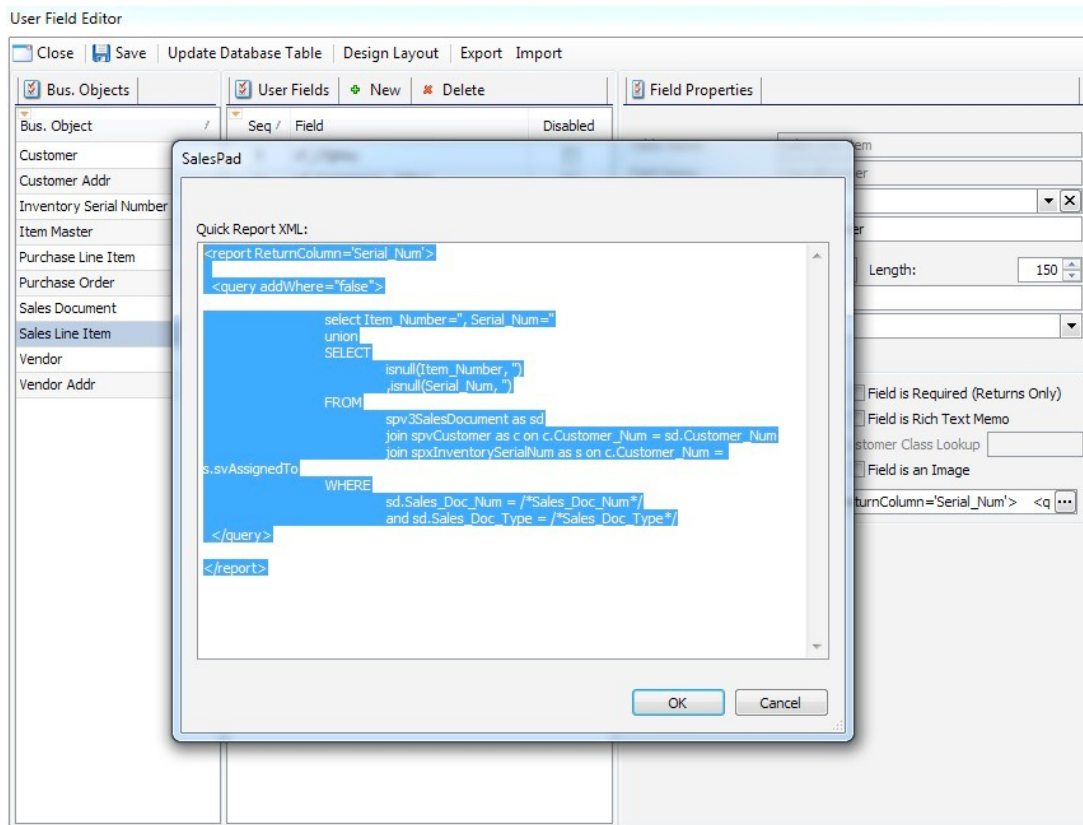
Field is a File Attachment Field is Rich Text Memo

Field is a Customer Lookup Customer Class Lookup [Text Box]

Field is a Hyperlink Field is an Image

Quick Report: <report ReturnColumn='Serial_Num'> <q [Ellipsis]

Click the ellipsis (...) to bring up the editor.



Essential report outline includes a tag and a tag:

YOUR SQL HERE

After the outline is roughed in, you can start to fill in the details. Example:

```

select Item_Number='', Serial_Num='' union
SELECT
FROM
s.svAssignedTo
WHERE

isnull(Item_Number, '')
,isnull(Serial_Num, '')
spv3SalesDocument as sd
join spvCustomer as c on c.Customer_Num = sd.Customer_Num join spxInventorySerialNum
as s on c.Customer_Num =
sd.Sales_Doc_Num = /*Sales_Doc_Num*/
and sd.Sales_Doc_Type = /*Sales_Doc_Type*/

```

In this example, we are pulling values from the screen into the *where* clause.

WHERE

sd.Sales_Doc_Num = /*Sales_Doc_Num*/
and sd.Sales_Doc_Type = /*Sales_Doc_Type*/

The highlighted sections will get replaced at runtime with the values from the screen. Here is a list of valid replacement tags:

On Sales Document Field:

/*Sales_Doc_Num*/
/*Sales_Doc_Type*/
/*Customer_Num*/

On an Item:

/*Item_Number*/

On a Customer Addr:

/*Customer_Num*/
/*Address_Code*/

On a Purchase Order:

/*Po_Number*/

Once you have the report defined, you can navigate to the appropriate screen and click the drop--down to see the results:

Item	Description	Qty	UoM	Serial Number	Price	Cost	Ext Price	Req S
NISSAN GT-R	2011 Nissan GT-R V Spec	1	EACH		0.00	67,808.00	0.00	9/30/1

Item_Number	Serial_Num
NISSAN GT-R	1NNSV22ZXS1000001
NISSAN GT-R	1NNSV22ZXS1000002