



PayFabric Gift Cards

Jacob Beimers - 2024-11-22 - PayFabric

Gift cards can be used in EMV terminal transactions with SalesPad's PayFabric integration. However, they must be setup in one of the following ways.

Method #1: Map empty card types to a GP card

SalesPad minimum version: 4.6.0.0

In SalesPad's Settings screen, there's a PayFabric setting called Credit Card Type Mappings. It maps PayFabric card types such as MasterCard and Visa to card names within Dynamics GP. PayFabric card types are on the left side of each mapping while GP card names are on the right side. Accurately filling out this setting is necessary because payments must use a valid GP card.

Customer Search xSales Documents xSettings x

CloseSaveExport SettingsImport SettingsExport Settings List

Filter:
payfabric

ExpandCollapse

▼ PayFabric

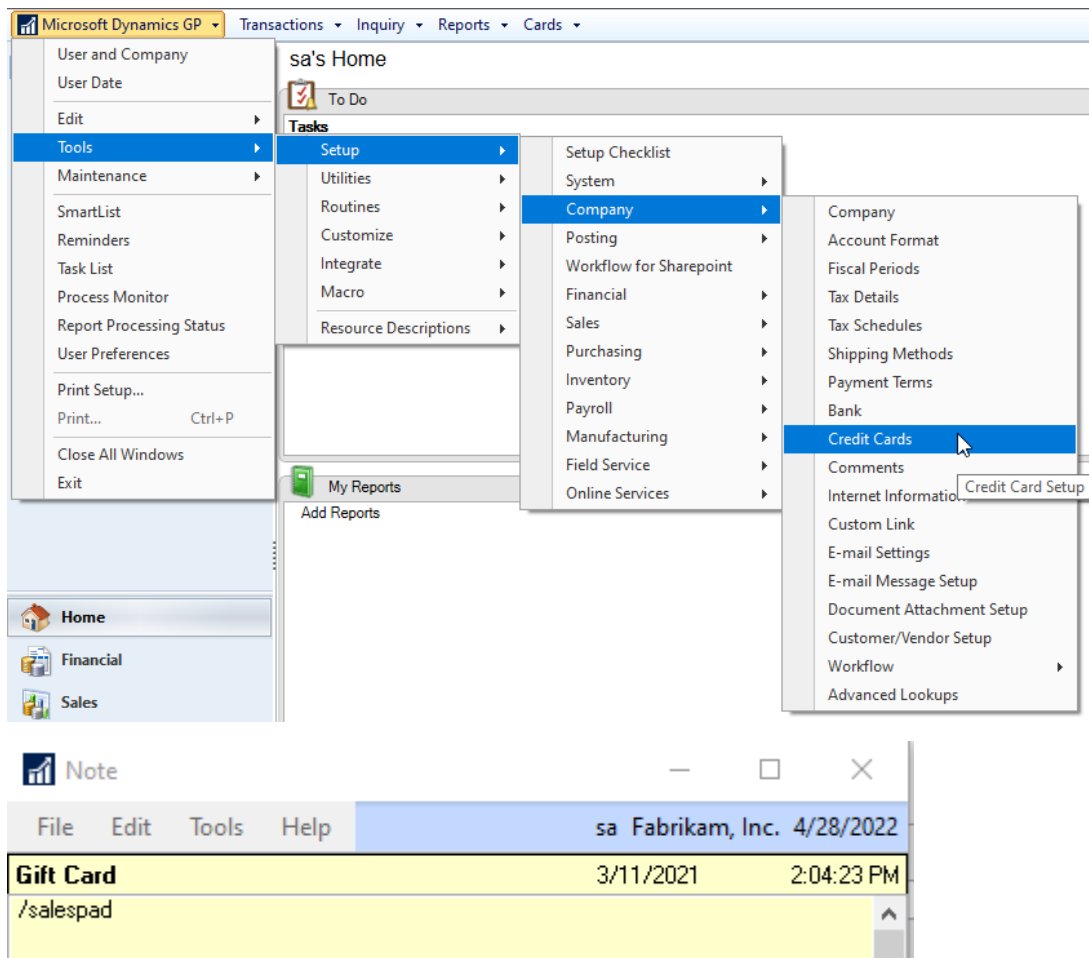
Allow Authorize	Groups:Admin
Allow Capture	Groups:Admin
Allow Charge	Groups:Admin
Allow Credit	Groups:Admin
Allow Deposits	Groups:Admin
Allow OverCharge	Groups:Admin
Allow Payments	Groups:Admin
Allow Void	Groups:Admin
Cash Receipt Post Transaction Script	
Credit Card Type Mappings	AmericanExpress:AMEX; Discover:DC; MasterCard:MC; Visa:VI; :Gift_Card
Default Gateway	DotNet2
Default Gateway For Sales Doc ID	
Device Key	
Device Password	*****
EMV Timeout	180000
Export Transactions To Credit Card Advantage	False
Include Authorizations When Calculating Default Amount	False
PayFabric Allow Create GP Payment	(NONE)
PayFabric Customer ID UDF	
PayFabric Logging	False
PayFabric Theme	
PayLink Logging	False
Payment API URL	https://sandbox.payfabric.com/Payment/API/
Payment Hosted Page URL	https://sandbox.payfabric.com/Payment/Web/
Post Transaction Script	
Production Database Name	
Prompt User When Closing Unprocessed Transaction	False
Sales Document Payment Pre-Save Script	
Send Document and Line Level Data	True
Send Shipping Address Info	False
Show Zero Dollar Auth On Payment Link	False
Transaction URL	

Credit Card Type Mappings

Mapping of Credit Card Types to Dynamics. Supported Types: AmericanExpress, Discover, MasterCard, and Visa. Defaults to 'AmericanExpress:AMEX; Discover:DC; MasterCard:MC; Visa:VI'.

PayFabric gift cards do not specify a card type, but this setting is capable of mapping the absence of a PayFabric card type to a GP card name. If a user gives Credit Card Type Mappings a value such as "Visa:VI; :Gift_Card", PayFabric cards which do not have a card type are mapped to a GP card named Gift_Card, just like how Visa cards from PayFabric map to a GP card named VI.

If there isn't a suitable GP card to map to, a new card can be created in Dynamics GP by going to Microsoft Dynamics GP > Tools > Setup > Company > Credit Cards. Note that cards must have a note which contains the text "/salespad" in order to be usable within SalesPad.



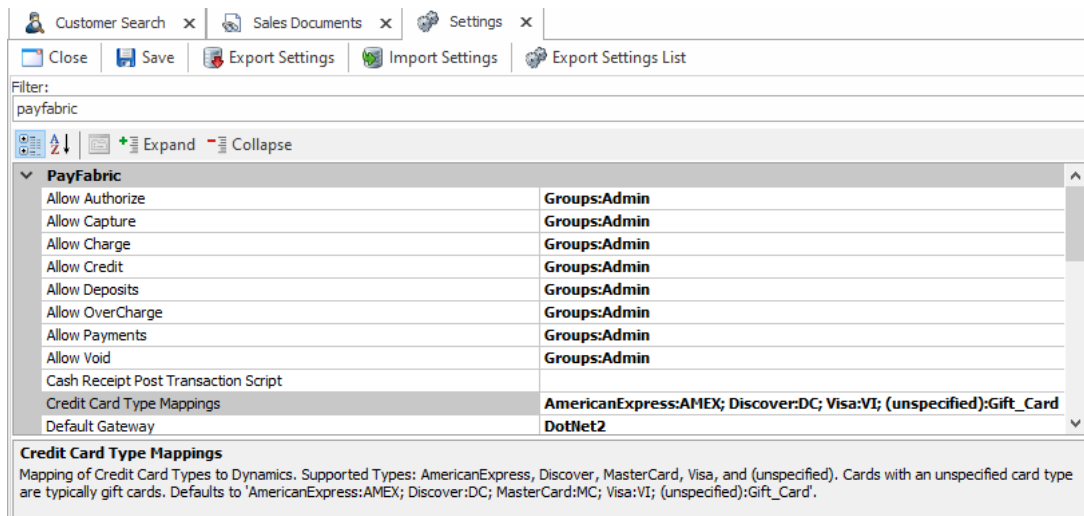
This method can also be used in SalesPad Mobile versions 1.3.47.4 and above. Note that SalesPad Mobile uses a copy of this setting within SalesPad GP Mobile Server instead of the SalesPad setting.

Method #2: Map unspecified card types to a GP card

SalesPad minimum version: 5.2.27

In the first method, gift cards can be mapped to GP cards with an expression such as "Visa:VI; :Gift_Card". The empty string in the gift card mapping is difficult to interpret, so SalesPad version 5.2.27 adds an alternate way to express this mapping.

In SalesPad's Settings screen, there's a PayFabric setting called Credit Card Type Mappings. If the setting contains a mapping such as "(unspecified):Gift_Card", PayFabric cards such as gift cards which don't specify a card type will be mapped to a GP card named Gift_Card.



This setting will have the "(unspecified):Gift_Card" mapping by default if no one ever configured this setting in previous versions of SalesPad. If there isn't a GP card named Gift_Card, a user will have to either create one or change the setting's value to a valid GP card name.

Note that the original "Visa:VI; :Gift_Card" syntax from the first method still works within SalesPad version 5.2.27 and higher, so upgrading SalesPad does not require switching to this method.

Method #3: Map unspecified card types per store

SalesPad minimum version: 5.2.27

Card mappings can be defined for specific stores via the Store Setup module. Store level mappings take priority over the Credit Card Type Mappings setting, but only for PayFabric cards which are included in the store's Credit Card Mapping.

To configure store level mappings, open the Store Setup module, select a store, select the PayFabric tab, and click the ... button on the Credit Card Mappings field.

Security Editor

Store Setup

ard Device Copy PayFabric Setup To Store

Credit Card Mapping

AddDelete

Mappings

PayFabric Credit Cards	GP Credit Cards
AmericanExpress	AMEX
Discover	DI
MasterCard	MC
Visa	VI
(unspecified)	Gift Card

OKCancel

PayFabricSquare

Default Gateway:DotNet2

Credit Card Mappings:{AmericanExpress|AMEX}{Discover|DI}{MasterCard|MC}{Visa|VI}{(unspecified)|Gift Card}

On this screen, gift cards can be mapped by adding a row that has “(unspecified)” in the PayFabric Credit Cards column and a valid GP card in the other column.