



[Knowledgebase](#) > [ShipCenter](#) > [Miscellaneous](#) > [Packing in ShipCenter](#)

Packing in ShipCenter

Cavallo Support - 2025-06-18 - [Miscellaneous](#)

Overview

Packing can be done in ShipCenter, SalesPad Desktop, or DataCollection. If a document has preexisting packages or shipments, they will be available for shipping in ShipCenter by selecting the document in ShipCenter's Shipment Monitor, then double-clicking the shipment from the Shipments grid.

Source Doc...	Location Name	Customer ID	Customer Name	Document Date	Shipping Method	Subtotal
QTEST1023	WAREHOUSE	BAKERSEM0001	Baker's Emporium Inc.	03/05/2017 12:00 AM	GROUND	\$9.95
ORDST2225	WAREHOUSE	CENTRALD0001	Central Distributing	05/23/2017 12:00 AM	GROUND	\$1,799.95
ORDST2227	WAREHOUSE	BERRYMED0001	Berry Medical Center	04/12/2017 12:00 AM	GROUND	\$1,680.55
ORDST2229	WAREHOUSE	ALTONMAN0001	Alton Manufacturing	04/12/2017 12:00 AM	GROUND	\$41,385.54
ORDST2230	WAREHOUSE	BAKERSEM0001	Baker's Emporium Inc.	04/12/2017 12:00 AM	GROUND	\$135.20
ORDST2231	WAREHOUSE	BAKERSEM0001	Baker's Emporium Inc.	04/12/2017 12:00 AM	GROUND	\$32,000.00
ORDST2232	WAREHOUSE	ROSELLEN0001	Rosellen General Hospital	04/12/2017 12:00 AM	GROUND	\$32,000.00

Packages created in DataCollection will be grouped into a shipment per document in ShipCenter. Shipments created or modified in ShipCenter will also be visible in SalesPad Desktop, along with tracking and freight cost information.

Note: This documentation covers package setup functionality for ShipCenter versions beyond version 1.2. For documentation on packing in ShipCenter in versions 1.2 and older, please reference [this documentation](#).

Package Templates

Package Templates allow for the definition of the shipping containers you intend to use. This eliminates the need to enter package dimensions for each shipment. Instead, users select the appropriate template from a predefined list on the New Shipment screen.

To add a Package Template, Click the **New** button on the Package Templates tab. Add the dimensions according to the desired package size, then click **OK**.

Package Editor

Package Properties

Package Description*

Barcode

Additional Handling Needed

Is Inactive

Weight

Dimensions

Large Package

Length

Width

Height

Existing templates are displayed in the Packages grid. They can be modified using the Edit button, or removed with the Delete button.

Package Templates x

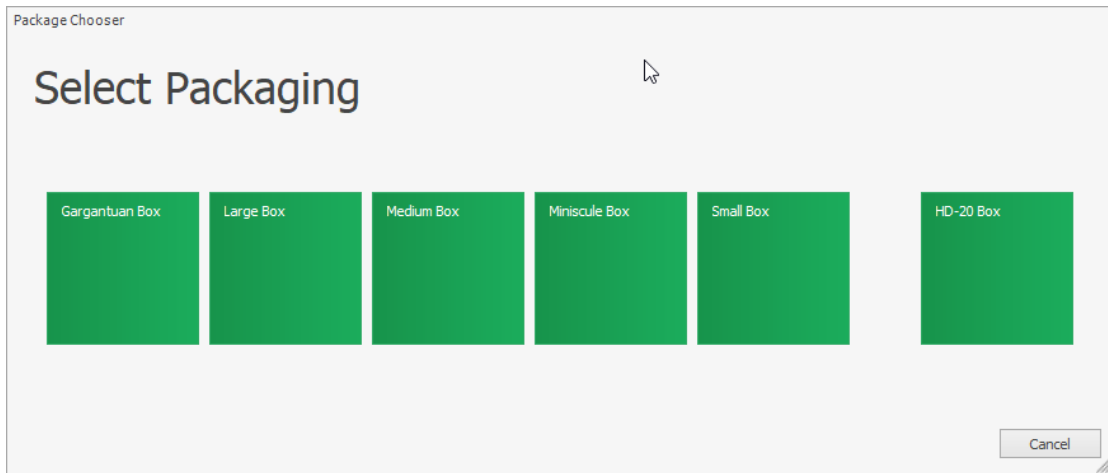
Close | New | Delete | Edit

Packages

Package Description	Length ▲	Width	Height	Dimension UoM	Weight	Weight UoM
Miniscule Box	2.0	2.0	2.0	Inch	0.5	LBS
Small Box	5.0	5.0	5.0	Inch	2.5	LBS
Medium Box	10.0	10.0	10.0	Inch	0.2503	LBS
Large Box	15.0	12.0	12.0	Inch	5.0	LBS
Gargantuan Box	36.0	24.0	24.0	Inch	100.0	LBS

Any templates that were created in SalesPad Desktop do not need to be duplicated, as they will appear automatically in the packing screen.

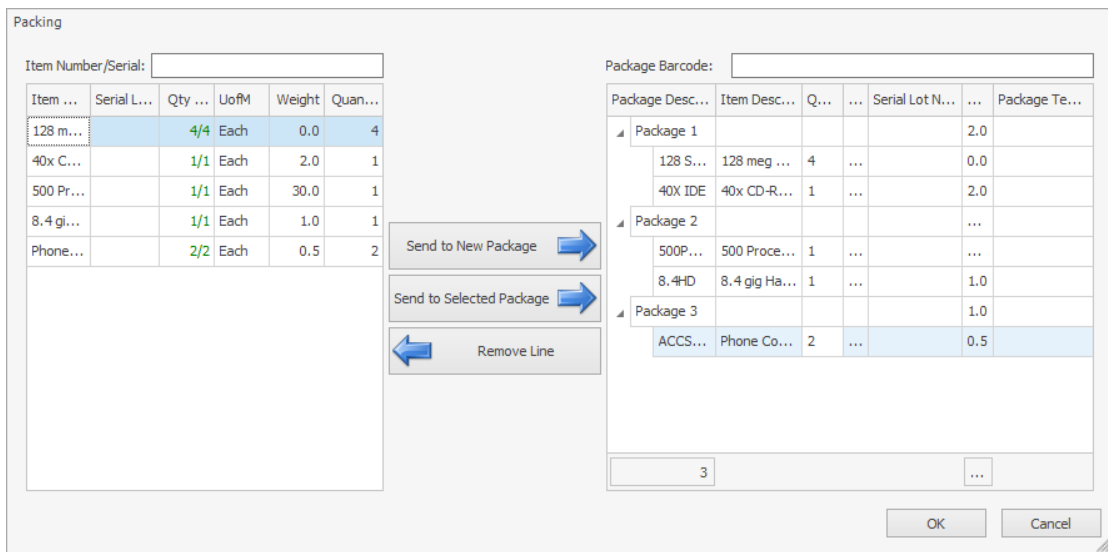
To add a Package Template to a shipment, click in the Package Template window. Select the desired template. The dimensions and weight from the template will be added to the shipment.



Packing Items on a Shipment

In the Shipment Editor, click the **Items** button. Sales line items are shown based on fulfillment. (i.e. If the sales document has a serial tracked line item with a quantity of 2, this grid will show 2 lines, one for each serial). Quantities on this screen are shown in the item's base UoM.

The Packages grid displays each package and the line items that belong to each package. If a shipping weight is specified for an item, this weight will be added to the total package weight when the item is added to the package.



To assign a line to a package, select a line and click **Send to New Package**, **Send to Existing Package**, or drag and drop onto the Packages grid. This will assign the remaining quantity of unpacked items from that line, then focus the Quantity field.

You can also enter a value in the Item Number/Serial field, then press the Tab key. This will assign a quantity of 1 to the selected package of the first unpacked item that matches either the item number, serial number or lot number entered. This method can be used with a barcode scanner by focusing the Item Number/Serial field and setting the scanner up to send a Tab character after scanning the code.

Alternatively, enter or scan a value into the Barcode Lookup field to add a new package to the shipment from the template associated with that barcode.

Remove items or packages from the shipment by selecting the row in the grid and either clicking the **Remove Line** button or pressing the Delete key.

Security

Shipment Editor - Prevent Partial Shipment: If enabled, all lines on the sales document must be fully packed before processing the shipment.

Shipment Monitor - Grants access to the Shipment monitor to view shipping source documents and generate shipments from them.

Package Templates - Grants access to the module, allowing the creation of templates.

Settings

Source Document > Ship Complete - If enabled and no line items have been packed, all line items will be automatically assigned to the first package on the shipment (Default: True).

Forward Only On Fully Shipped - If enabled, ShipCenter will only attempt to forward a document through workflow when all of its line items have been packed.