



## Mission Control: How To Capture a HAR File

Megan De Freitas - 2024-12-03 - Mission Control Documentation

When working with the Cavallo team to resolve ongoing issues, there will be times where the team may request a HAR file to help our development team diagnose the issue. Below is a quick video and step by step guide on how to capture a HAR file.

### Step by Step:

1. Right-click in the browser window or tab and select Inspect.

Mission Control

Customers Documents Products +

All Workflows

Last updated Less than a min ago Refresh

Total Documents 439

Cost \$741,280.00

Total \$1,088,856.36

Approvals (1)

Search

Select All

Order Workflow

Workflows (13)

Search

Select All

Quote Workflow

Order Workflow

Invoice Workflow

Return Workflow

Search by Document Number

Type to Search

EC

HR

HR

+3

| DOC NUMBER  | PO NUMBER | CUSTOMER                   | DOC DATE     | STATUS        | RELATED DOCS | PRODUCTS | MARGIN | MARGIN AMOUNT | COST     |            |
|-------------|-----------|----------------------------|--------------|---------------|--------------|----------|--------|---------------|----------|------------|
| S-ORD101078 | -         | School of Fine Art 30000   | Oct 27, 2022 | Released      | +1           | 0        | 1      | 22%           | \$220.10 | \$780.70   |
| S-ORD101079 | -         | School of Fine Art 30000   | Oct 27, 2022 | Released      | +1           | 0        | 1      | 22%           | \$220.10 | \$780.70   |
| S-ORD101087 | -         | A Adatum Corporation 10000 | Nov 07, 2022 |               |              |          |        | 22%           | \$220.10 | \$780.70   |
| S-ORD101093 | -         | A Adatum Corporation 10000 | Nov 07, 2022 |               |              |          |        | 22%           | \$220.10 | \$780.70   |
| S-ORD101094 | -         | A Adatum Corporation 10000 | Nov 08, 2022 |               |              |          |        | 22%           | \$220.10 | \$780.70   |
| S-ORD101095 | -         | A Adatum Corporation 10000 | Nov 08, 2022 |               |              |          |        | 22%           | \$220.10 | \$780.70   |
| S-ORD101098 | -         | A Adatum Corporation 10000 | Nov 09, 2022 |               |              |          |        | 22%           | \$262.60 | \$931.00   |
| S-ORD101101 | -         | School of Fine Art 30000   | Nov 14, 2022 |               |              |          |        | 22%           | \$220.10 | \$780.70   |
| S-ORD101102 | -         | A Adatum Corporation 10000 | Nov 14, 2022 | Pending Pl... | +5           | 2        | 1      | 22%           | \$220.10 | \$780.70   |
| S-ORD101105 | -         | A Adatum Corporation 10000 | Nov 16, 2022 | Allocated     | +1           | 0        | 1      | 22%           | \$220.10 | \$780.70   |
| S-ORD101107 | -         | A Adatum Corporation 10000 | Nov 16, 2022 | Backorders... | +2           | 1        | 1      | 22%           | \$440.20 | \$1,561.40 |
| S-ORD101108 | -         | A Adatum Corporation 10000 | Nov 16, 2022 |               |              |          |        | 22%           | \$220.10 | \$780.70   |

Back

Alt-Left Arrow

Forward

Alt-Right Arrow

Reload

Ctrl-F

Save as...

Ctrl+S

Print...

Ctrl+P

Cast...

Search images with Google

Send to your devices

Create QR Code for this page

Translate to English

View page source

Ctrl+U

Inspect

FF

Mission Control
Customers
Documents
Products
+

Documents (442)
New Document

Search by Doc Number
Type to Search

| DOC NUMBER | PO NUMBER | CUSTOMER                      | DOC DATE     | QUEUE     | STATUS      | RELATED DOCS | PRODUCTS |
|------------|-----------|-------------------------------|--------------|-----------|-------------|--------------|----------|
| S- QUO1001 | -         | Trey Research<br>20000        | Apr 02, 2022 | New Quote |             | 0            | 1        |
| S- QUO1002 | -         | Alpine Ski House<br>40000     | Apr 03, 2022 | New Quote |             | 0            | 1        |
| S- QUO1007 | -         | A Adatum Corporation<br>10000 | Oct 14, 2022 | New Quote | No Products | 0            | 0        |
| S- QUO1012 | -         | A Adatum Corporation<br>10000 | Oct 19, 2022 | New Quote | No Products | 0            | 0        |
| S- QUO1013 | -         | Trey Research<br>20000        | Oct 24, 2022 | New Quote | No Products | 0            | 0        |
| S- QUO1014 | -         | Trey Research<br>20000        | Oct 24, 2022 | New Quote | No Products | 0            | 0        |
| S- QUO1017 | -         | A Adatum Corporation<br>10000 | Nov 01, 2022 | New Quote |             | 0            | 2        |
| S- QUO1018 | -         | A Adatum Corporation<br>10000 | Nov 09, 2022 | New Quote | No Products | 0            | 0        |
| S- QUO1021 | -         | A Adatum Corporation<br>10000 | Dec 09, 2022 | New Quote | No Products | 0            | 0        |
| S- QUO1022 | -         | School of Fine Art<br>30000   | Jan 04, 2023 | New Quote | No Products | 0            | 0        |

Showing 10 out of 442

Mission Control

Customers

Documents

Products

+

Documents

New Document

No Documents

Filter

☐ All blocked cookies
 ☐ Blocked requests
 ☐ 3rd-party requests

☐ Invert
 ☐ Hide data URLs
 ☐ Fetch/XHR
 ☐ CSS
 ☐ img
 ☐ Media
 ☐ Font
 ☐ Doc
 ☐ Wasm
 ☐ Manifest
 ☐ Other

1000 ms

2000 ms

3000 ms

4000 ms

5000 ms

6000 ms

7000 ms

| Name                               | Status | Type         | Indicator | Size           | Time        | Waterfall |
|------------------------------------|--------|--------------|-----------|----------------|-------------|-----------|
| logo/1E1.png                       | 200    | png          | OK        | 64x388(79.2)ch | 0 ms        |           |
| search/3f0e0f8.png                 | 200    | svg+xml      | OK        | (memory...)    | 0 ms        |           |
| close-grp/6fe58375.svg             | 200    | svg+xml      | OK        | 64x388(79.2)ch | 0 ms        |           |
| arrow-down-black/bc550ab.png       | 200    | svg+xml      | OK        | 64x388(79.2)ch | 0 ms        |           |
| checkbox-on-white/71d2b2b.png      | 200    | svg+xml      | OK        | 64x388(79.2)ch | 0 ms        |           |
| bc_sans_and_monocodes_setup/co...  | 200    | xhr          | OK        | 1.6 kB         | 146 ms      |           |
| documents?page=1&per_page=10...    | 200    | xhr          | OK        | 64x388(79.2)ch | 105.6 s     | 329 ms    |
| customer_templates/company_id=...  | 200    | xhr          | OK        | 64x388(79.2)ch | 1.9 kB      | 144 ms    |
| bc_fe7bc7c4cug=32%CravalloFu...    | 200    | xhr          | OK        | 64x388(79.2)ch | 242.6 s     | 189 ms    |
| permissions/company_id=263         | 200    | xhr          | OK        | 64x388(79.2)ch | 2.3 kB      | 172 ms    |
| bc_fe7bc7c4cug=32%CravalloFu...    | 200    | xhr          | OK        | 64x388(79.2)ch | 44.1 kB     | 272 ms    |
| bc_fe7bc7c4cug=32%CravalloFu...    | 200    | xhr          | OK        | 64x388(79.2)ch | 1.7 kB      | 228 ms    |
| bc_fe7bc7c4cug=32%CravalloFu...    | 200    | xhr          | OK        | 64x388(79.2)ch | 37.2 kB     | 276 ms    |
| vertical-align/6a7e7a7.png         | 200    | img+xml      | OK        | 64x388(79.2)ch | (memory...) | 0 ms      |
| blobhttp://waspad-front-stage.h... | 200    | octet-str... | OK        | 64x388(79.2)ch | 0 B         | 7 ms      |
| blobhttp://waspad-front-stage.h... | 200    | octet-str... | OK        | 64x388(79.2)ch | 0 B         | 4 ms      |
| blobhttp://waspad-front-stage.h... | 200    | octet-str... | OK        | 64x388(79.2)ch | 0 B         | 2 ms      |
| documents?page=3&per_page=10...    | 200    | xhr          | OK        | 64x388(79.2)ch | 5.4 kB      | 509 ms    |
| bc_fe7bc7c4cug=32%CravalloFu...    | 200    | xhr          | OK        | 64x388(79.2)ch | 1.7 kB      | 129 ms    |
| permissions/company_id=263         | 200    | xhr          | OK        | 64x388(79.2)ch | 2.3 kB      | 191 ms    |
| documents?page=7&per_page=10...    | 500    | xhr          | OK        | 64x388(79.2)ch | 1.8 kB      | 233 s     |
| empty-documents/785514d.png        | 200    | img+xml      | OK        | 64x388(79.2)ch | 2.6 kB      | 113 ms    |

44 requests 215.8 kB transferred 4.7 MB resources Finish: 6.88s DOMContentLoaded: 446 ms Load: 583 ms

Console

Issues

What's New

Highlights from the Chrome 129 update

Recorder panel updates

New step context menu, option to copy a single step from a script, remove the first navigation step, and more.

Improved JavaScript debugging

inline preview for WeakRef, correct preview of shadowed inline variable, and more.

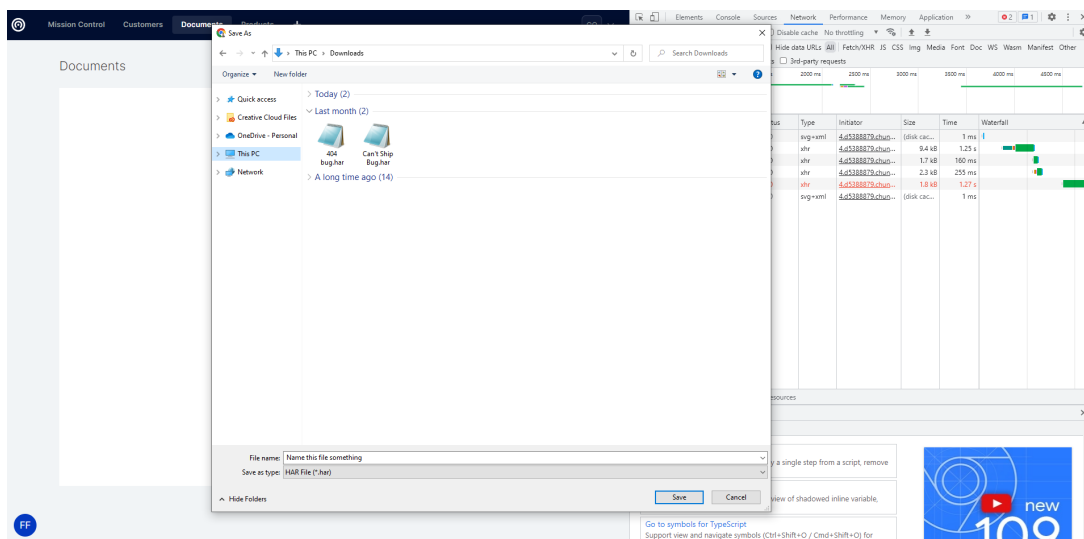
Go to symbols for TypeScript

Support view and navigate symbols (Ctrl+Shift+O / Cmd+Shift+O) for

*Note: With Google Chromes latest update, saving a HAR file has moved locations. In addition, exporting with sensitive data has to be enabled in settings. See the above video recording for assistance.*

| Name                                 | Status    | Type      | Initiator            | Size  | Time    |
|--------------------------------------|-----------|-----------|----------------------|-------|---------|
| ae0e8cb45d82627a2eea701fc491ad8b     | 202       | fetch     | index-Cbfl8lc.js:120 | 149 B | 28 ms   |
| ae0e8cb45d82627a2eea701fc491ad8b     | 202       | fetch     | index-Cbfl8lc.js:120 | 149 B | 30 ms   |
| rgstr?k=client-p6bGsSNf6TFg3PW49L... | (pending) | ping      | index-Cbfl8lc.js:147 | 0 B   | Pending |
| ae0e8cb45d82627a2eea701fc491ad8b     | 202       | fetch     | index-Cbfl8lc.js:120 | 149 B | 27 ms   |
| ae0e8cb45d82627a2eea701fc491ad8b     | 202       | fetch     | index-Cbfl8lc.js:120 | 149 B | 27 ms   |
| rgstr?k=client-p6bGsSNf6TFg3PW49L... | (pending) | ping      | index-Cbfl8lc.js:147 | 0 B   | Pending |
| token                                | 200       | preflight | Preflight            | 0 B   | 36 ms   |

5. Name the file and click save



6. Send the file over to your Cavallo contact.