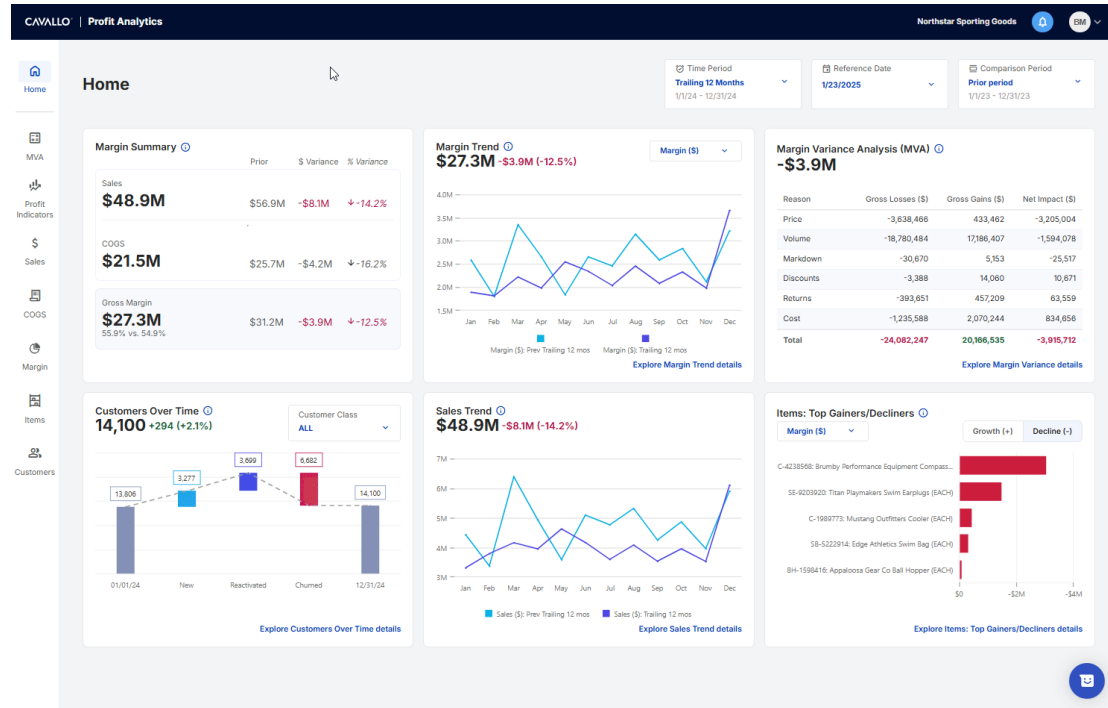




[Knowledgebase](#) > [Profit Max Platform \(fka Profit Analytics\)](#) > [Profit Max Platform Documentation](#) > [Major Features](#) > [Margin Trend](#)

## Margin Trend

Product Development - 2025-07-01 - [Major Features](#)



### Description

The Margin Trend widget presents a bar chart displaying total Margin \$ over a designated period. The chart also includes a comparison of Margin \$ from a selected prior period for easy analysis of trends and patterns. The Margin Trend widget has a second mode accessed via a dropdown, allowing the user to visualize the data as Margin % instead of Margin \$. This visualization aids in correlating sales performance with profitability over time.

### Chart

Open brave\_3ZzwdKJfkt-20240920-143902.gif



#### **Left Header**

##### Margin (\$) Mode

The total Margin \$ amount for the current period.

##### Margin (%) Mode

The total Margin % for the current period.

#### **Right Header**

A mode selector containing two options. The default selection is Margin (\$).

1. Margin (\$)
2. Margin (%).

#### **Charted Elements**

- Margin (\$) Mode
  - Margin \$ for the Current Period
  - Margin \$ for the Prev/Prior Period
- Margin (%) Mode
  - Margin % for the Current Period
  - Margin % for the Prev/Prior Period