



## Item Attributes

Cavallo IT - 2024-11-22 - Inventory

### Overview

Item Attribute Classes are used to supplement the Inventory Lookup capability by allowing users to search for items meeting a specified set of criteria (configured in the Item Attribute Class Editor).

Selected item(s) can then be added to a sales document.

### Security

Item Attribute Class Editor must be enabled in the Security Editor (Modules > Security). Find the setting in the security grid and make sure it is checked. Save any changes.

**Note:** You must log out and log back in for security changes to take effect.

### Setup

#### ITEM ATTRIBUTES TABLE

**Note:** The Item Attributes function was designed to bring outside data into item searching in SalesPad. This is a very tailored setup and will be slightly different for everyone.

1. First, identify where your attribute data is located. For example, the following table,

ItemAttribute:

	Item_Number	Description	Make	Body_Style	Part_Year	Product_Line	Sequence_No	Product_Group
1	HD2050	ACCORD COUPE	HONDA	ACCORD COUPE	2008	HD	00001250	P
2	HD2050	ACCORD COUPE	HONDA	ACCORD COUPE	2009	HD	00001250	P
3	HD6326R	ACCORD COUPE	HONDA	ACCORD COUPE	2008	HL	00001562	P
4	HD6326R	ACCORD COUPE	HONDA	ACCORD COUPE	2009	HL	00001562	P
5	HD6326L	ACCORD COUPE	HONDA	ACCORD COUPE	2008	HL	00001718	P
6	HD6326L	ACCORD COUPE	HONDA	ACCORD COUPE	2009	HL	00001718	P
7	HD1054R	ACCORD COUPE	HONDA	ACCORD COUPE	2008	FN	00001796	P
8	HD1054R	ACCORD COUPE	HONDA	ACCORD COUPE	2009	FN	00001796	P
9	HD1054L	ACCORD COUPE	HONDA	ACCORD COUPE	2008	FN	00001835	P
10	HD1054L	ACCORD COUPE	HONDA	ACCORD COUPE	2009	FN	00001835	P
11	HD8107R	ACCORD COUPE	HONDA	ACCORD COUPE	2008	MR	00001875	P
12	HD8107R	ACCORD COUPE	HONDA	ACCORD COUPE	2009	MR	00001875	P
13	HD170392S	CIVIC HATCHBACK/COUPE	HONDA	CIVIC HB/COUPE	1988	LI	00001875	A
14	HD170392S	CIVIC HATCHBACK/COUPE	HONDA	CIVIC HB/COUPE	1989	LI	00001875	A
15	HD8107L	ACCORD COUPE	HONDA	ACCORD COUPE	2008	MR	00002187	P
16	HD8107L	ACCORD COUPE	HONDA	ACCORD COUPE	2009	MR	00002187	P
17	HD8108R	ACCORD COUPE	HONDA	ACCORD COUPE	2008	MR	00002343	P

Your attribute table is used to craft a custom view that combines with SalesPad requirements. SalesPad only requires the Item Number column in the attribute table as it is needed for actually adding the item to the order:

1. Define the view with the following SQL script:

```

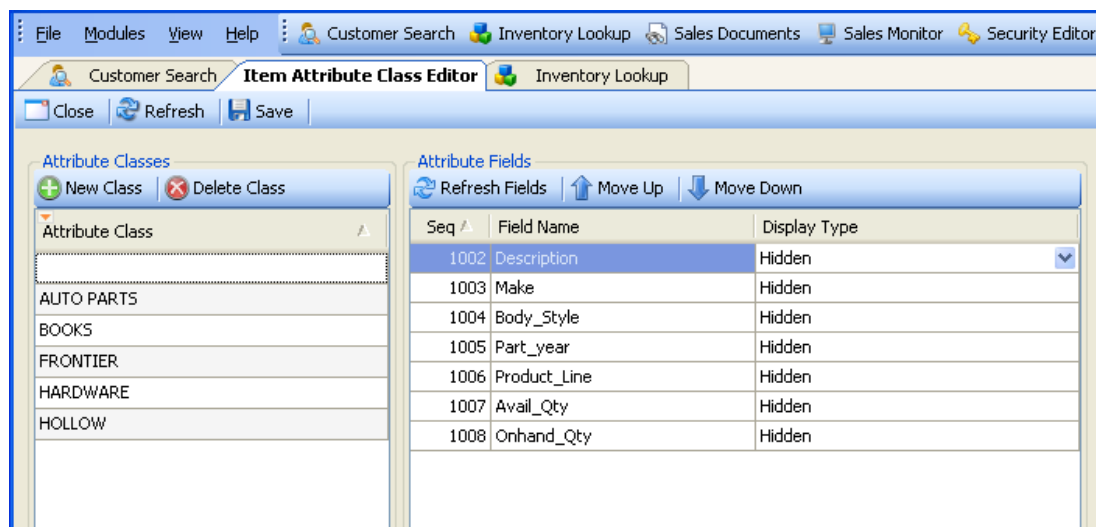
Create VIEW [dbo].[spcvAttributeItem] as
select
ia.Item_Number
, [Description] = isnull(im.Item_Description, ia.[Description])
, [Make]
, Body_Style
, Part_Year
, Product_Line
, Sequence_No
, Product_Group
, Avail_Qty=invs.Avail
, Onhand_Qty=invs.Onhand
from _ItemAttribute as ia with (nolock)
left join spvItemMaster as im with (nolock) on im.Item_Number=ia.Item_Number
left join spvInventorySearch as invs with (NOLOCK) on invs.Item_Number=ia.Item_Number

```

### ITEM ATTRIBUTE CLASS EDITOR

After defining the view, add the columns into the system using the Item Attribute Class Editor. This module is used to set up and configure the Item Attribute Classes. Go to Modules > Item Attribute Class Editor.

1. Click the **New Class** button on the left to create a new class



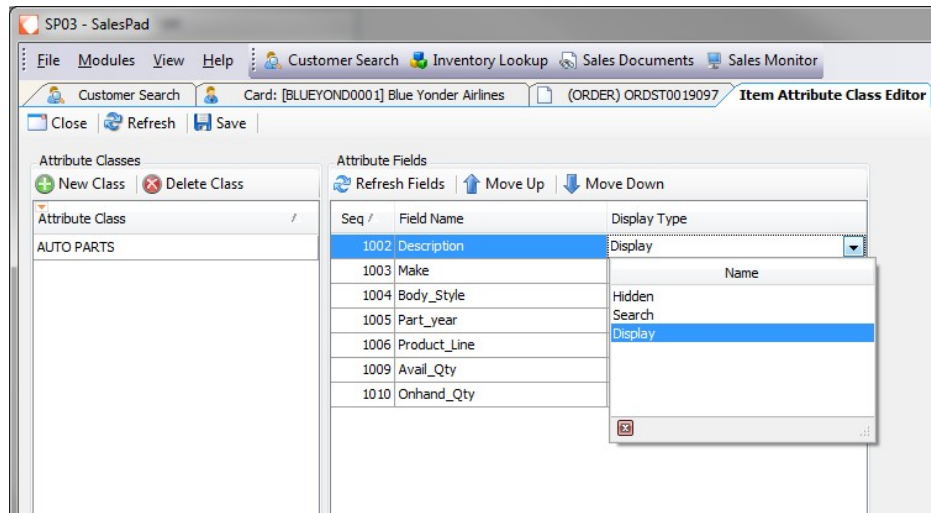
1. Name the class in the new field (Example: VEHICLE ACCESSORIES, ENGINE, CAR AUDIO)
2. Repeat for new classes as needed
3. Click the **Refresh Fields** button on the right hand pane

The system will read the columns from the database/SQL view "spcvItemAttribute" and place them into the Attributes Fields grid.

1. Next, click a Display Type field and select the display type for each column: There

are three options for how fields will appear in Sales Inventory Lookup:

- Hidden: Column won't show in search area or the result area
- Search: Column will show as a dropdown in the search area
- Display: Column will show in the results grid



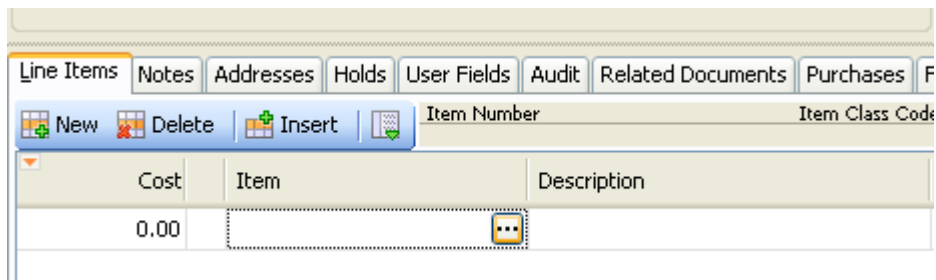
2. Click **Save** when finished making changes

**Note:** When a class is initially set, the associated class defaults will be set in GP. Future changes made to an item class in SalesPad will NOT override the item class settings in GP.

#### Sales Inventory Lookup - Attributes Search

Access Sales Inventory Lookup via the Sales Entry screen:

1. Open a sales document
2. Click **New** to add a new line item
3. Click in the Item field and click the ellipsis button (...)



4. The Sales Inventory Lookup screen appears. Click the Attribute Search tab

Sales Inventory Lookup

Item Search **Attribute Search**

Attribute Class: Choose an Attribute Class: AUTO PARTS

Attributes: Make: HONDA Body\_Style: ACCORD Part\_year: [ ]

Search

**Attribute Items**

Item Number	Body Style	Description	Make	Part year
ABC-183AX	ACCORD		HONDA	1982
ABC-183AX	ACCORD		HONDA	1983
ABC-183AX	ACCORD		HONDA	1984
ABC-183AX	ACCORD		HONDA	1985
ABC-183X	ACCORD		HONDA	1982
ABC-183X	ACCORD		HONDA	1983
ABC-183X	ACCORD		HONDA	1984
ABC-183X	ACCORD		HONDA	1985

Item Inventory | Item Properties | Item Sales | Item Purchases | Item Notes | Item Serial/Lot Numbers | Item Analysis | Item Serial Attributes | Item Sales Options | Item User Fields | Item Subs

Location	Description	Onhand	Allocated	Backord...	Onor...	Avail...	Next Expected Receipt	Location	Bin	Qty Type	Quantity	Qty Allocated

Hide Empty Bins

Add As Sample

OK Cancel

- Select an Attribute class from the dropdown list on the top right. Fields will display in the Attributes box based on the class setup
- Select Attributes from the dropdown lists and click **Search**. Results will appear in the Attribute Items grid directly below the search options (the more attributes you specify, the smaller the list should be)
- Select an item or items from the list to be added to the sales document.  
**Note:** If the Item Number is not in the item master, it will be added as a non-inventory item
- Click **OK** to return to the sales document