



[Knowledgebase](#) > [SalesPad](#) > [Reporting](#) > [In-Transit Transfer Report](#)

In-Transit Transfer Report

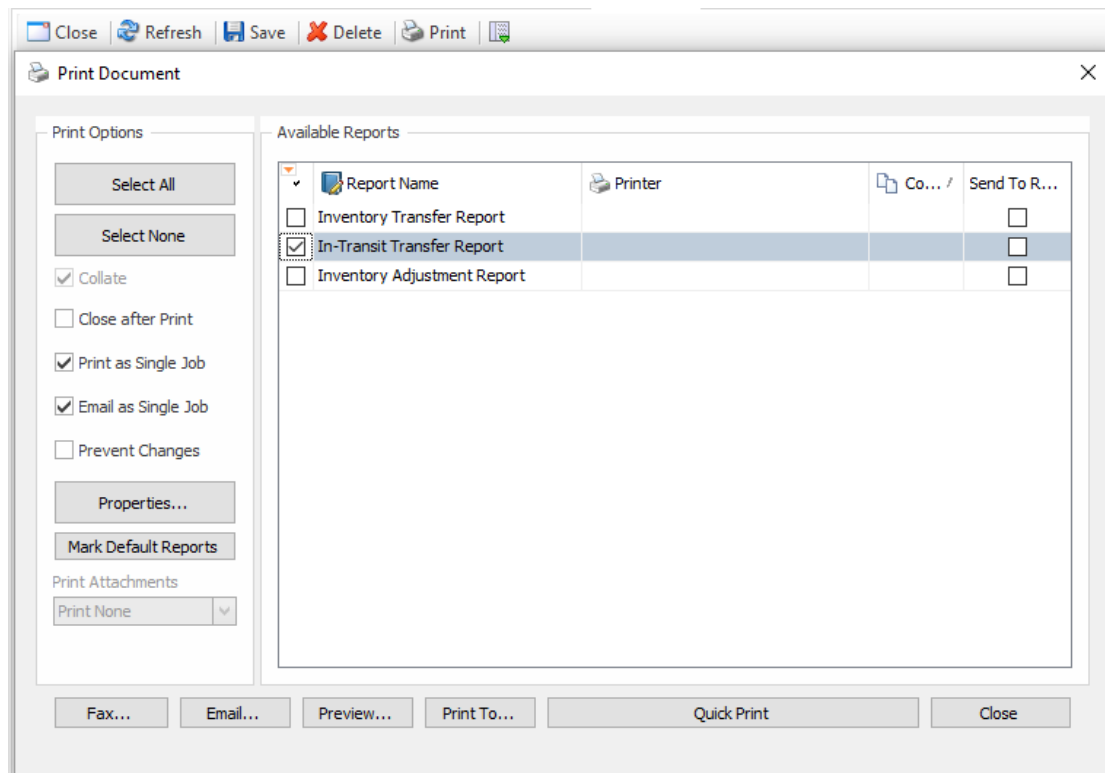
Megan De Freitas - 2024-11-22 - [Reporting](#)

Overview

The *In-Transit Transfer Report* security setting allows users to see and use the In-Transit Transfer Report default report. This report can be copied and edited in Report Designer. See the [Reports](#) documentation for more information on this functionality and other default reports.

Usage

The In-Transit Transfer Report is used in the In-Transit Transfer Entry module in SalesPad Desktop. When you want to print a report for the transfer, you can press the **Print** button at the top of the screen. For more information, refer to our In-Transit Transfer documentation.



Security

In-Transit Transfer Report – Allows users to see and use the In-Transit Transfer Report