



[Knowledgebase](#) > [ShipCenter](#) > [Miscellaneous](#) > [General AFW Usage](#)

# General AFW Usage

Megan De Freitas - 2024-11-22 - [Miscellaneous](#)

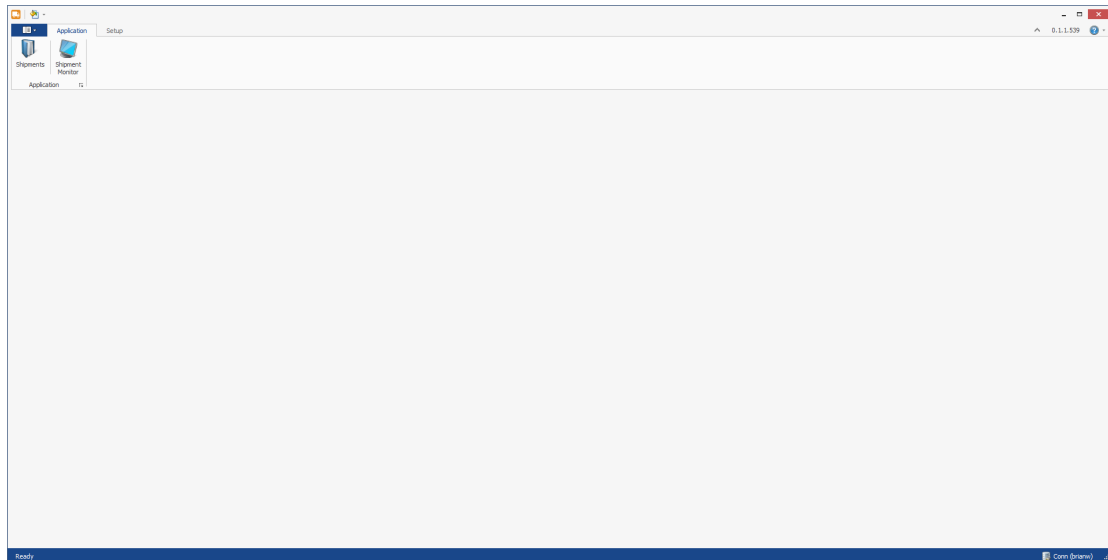
## Overview

This document covers the high level features available to the end user on all AFW products, while simultaneously covering the security and settings for SalesPad ShipCenter.

## Main Page

The user is presented with the standard Windows application layout for ribbon-based applications. Across the top, there is a theme editor, the administrative dropdown menu, Application and Setup ribbon tabs, a ribbon collapse and expand control, a version number, and a help icon.

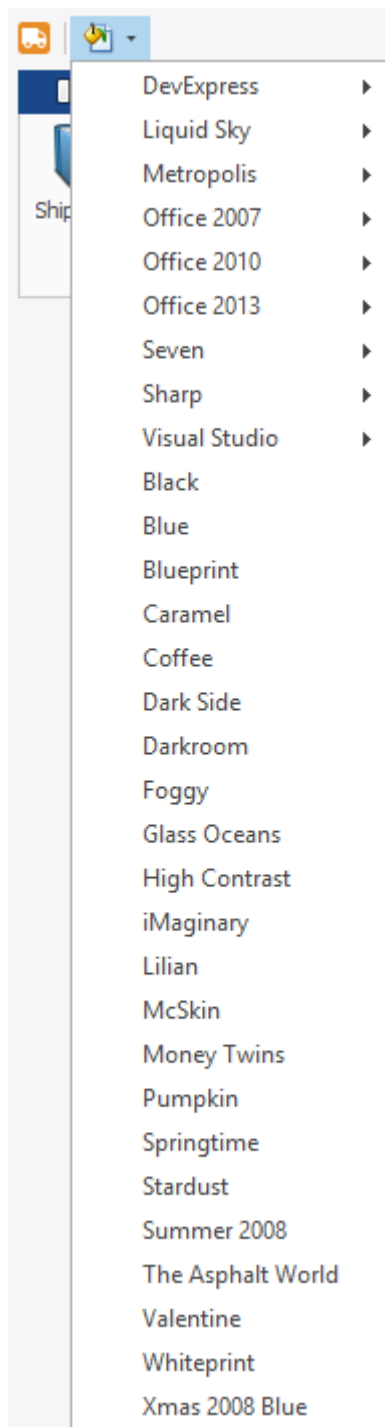
Across the bottom, there is a status (in this case, Ready) on the left, and the name of the active connection on the right (in this case, Conn).



## Theme Editor

The Theme Editor is a general application feature of all SalesPad desktop products.

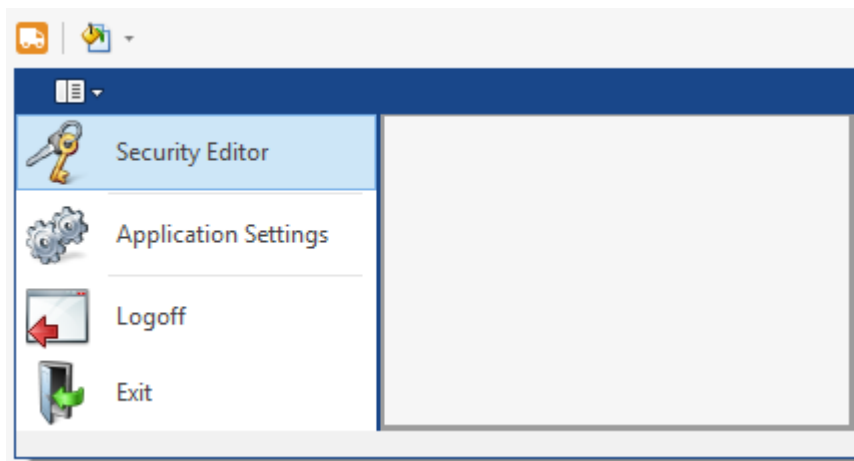
Clicking on either the Categories or the Themes will stylize the entire application.



#### Menu

Opening the administrative dropdown on the top left presents the user with available Menu options.

- Security Editor is used to manage users and user groups. It also contains pre-card security (like access) for the entire application.
- Application Settings is used to set global options, like being able to resize card headers.
- Logoff will return the user to the login wizard.
- Exit will completely exit the application.



### Application Settings

This screen contains all global options for the application.

#### Host Service

*Chosen Certificate* - If selected and *Enable\_SSL* is flagged True, the ShipCenter web service will be hosted using HTTPS.

*DNS Name* - This is the domain name component of a URL. Changing this will adjust all services using the hosted web service.

*Enable\_SSL* - If set to True, the application will attempt to host the web service via HTTPS.

*Host Port Number* - This is the port component of a URL. By default, HTTP services are hosted on port 80 and HTTPS services are hosted on port 443. To prevent most conflicts, ShipCenter is hosted by default on port 5501 using HTTP.

#### Logging

*Service Log Reset* - Sets the number of minutes between server log refreshes if using the Server form.

#### Misc.

*Default Country Code* - If set and an address is used without a country code and a country reference doesn't exist for the given country, the Default Country Code will be applied.

*Show Tray Notification on Soft Exit* - If set to True, closing the application using the **X** button on the top right corner will show a notification pop-up about the application being moved to the application tray. If set to False, the application will still close to the tray, but instead of showing a notification, it will simply cease to be visible to the user.

#### Ribbon

*Maximum Recent Items* - This determines the number of recent items that are available from ribbon dropdowns.

#### System UI Settings

*Card Header is Resizable* - Setting this to True will allow end users to resize card headers as they want.

