



DataCollection Grid Reports

Megan De Freitas - 2024-11-22 - Setup

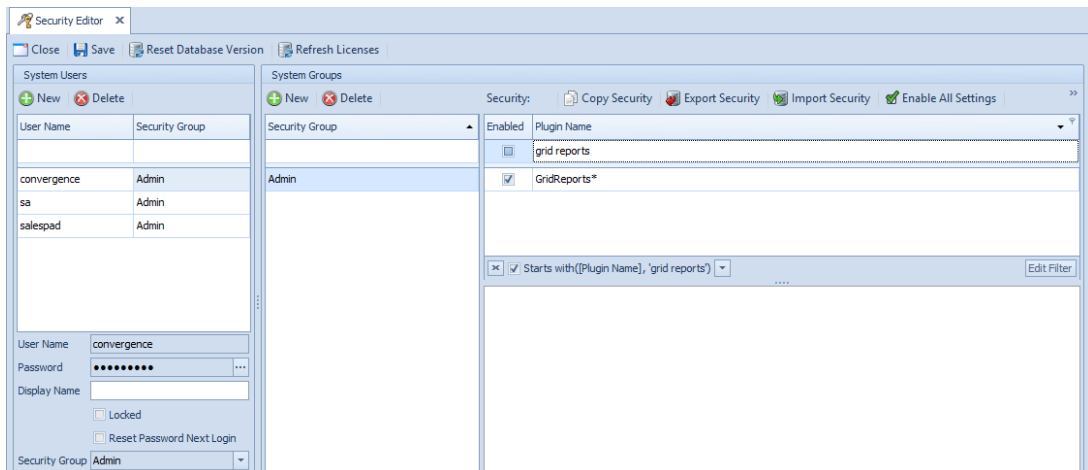
Overview

Grid Reports are powerful reporting tools that can be set up to display a wide range of information. Their primary purpose is to provide a mechanism to create and run simple reports based on SQL queries and user input.

Note: Grid Reports are only available in Advanced Console and Warehouse Management.

Security

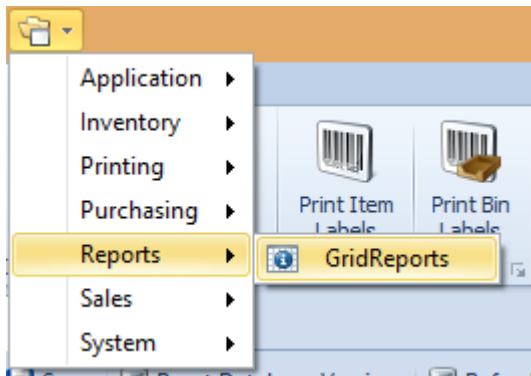
To enable Grid Reports in DataCollection, go to the Security Editor (Modules > System > Security Editor) and filter to *Grid Reports*. Make sure *Grid Reports* module is checked for the desired user group and save your changes. Log off and log back in for changes to take effect.



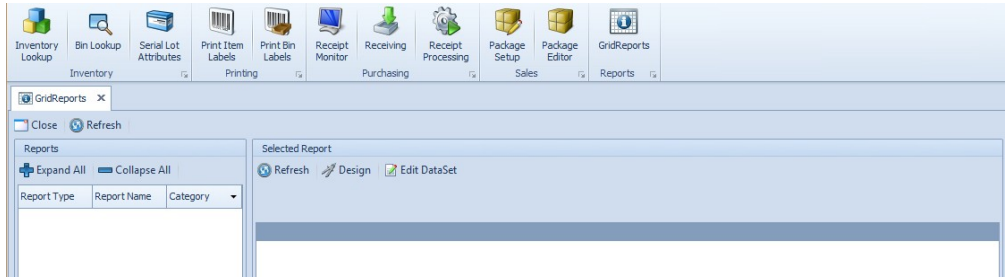
Usage

To activate Grid Reports, use the following steps:

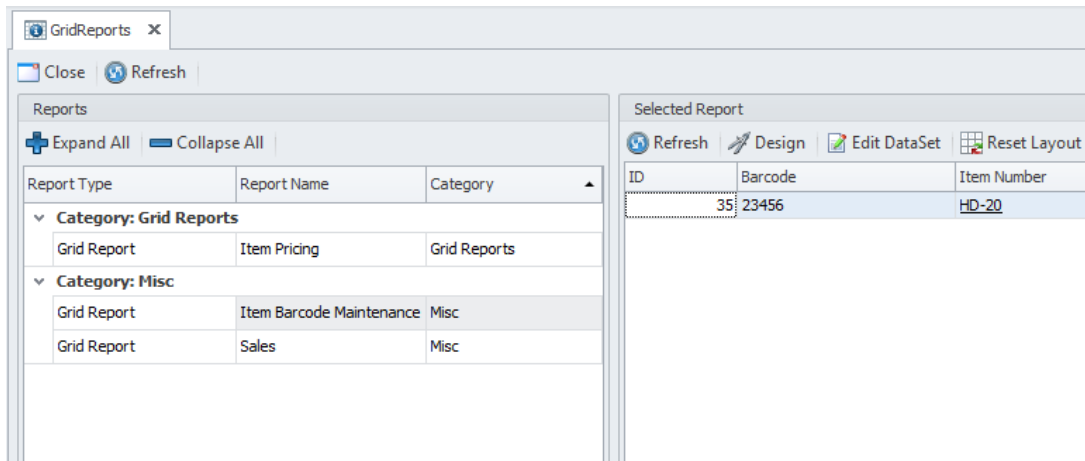
1. Go to the Modules folder.
2. Scroll down to Reports.
3. Click **Grid Reports**.



The following screen will appear:



Grid Reports Screen



Reports Panel

Reports		
Expand All Collapse All		
Report Type	Report Name	Category
▼ Category: Grid Reports		
Grid Report	Item Pricing	Grid Reports
▼ Category: Misc		
Grid Report	Item Barcode Mainten...	Misc
Grid Report	Sales	Misc

Expand All: Expands report categories.

Collapse All: Collapses report categories.

Report Name - Column header that displays the given name of the reports.

Report Type - Column header that displays the type of report, such as grid or printed report.

Selected Report Panel

Selected Report		
Refresh Design Edit DataSet Reset Layout Import Export Print Autorun Report		
Item_Number	<input type="text"/>	
UofM_Schedule	<input type="text"/>	
ITEMNMBR	ITMSHNAM	ITEMDESC
100XLG	Phone	Green Phone
128 SDRAM	RAM	128 meg SDRAM
24X IDE	CD ROM	24x CD-ROM
256 SDRAM	RAM	256 meg SDRAM
32 SDRAM	RAM	32 meg SDRAM
32X IDE	CD ROM	32x CD-ROM
333PROC	Processor	333 Processor
4.5HD	Drive	4.5 gig Hard Drive
400PROC	Processor	400 Processor
40X IDE	CD ROM	40x CD-ROM
450PROC	Processor	450 Processor
500PROC	Processor	500 Processor
6.5HD	Drive	6.5 gig Hard Drive
64 SDRAM	RAM	64 meg SDRAM
8.4HD	Drive	8.4 gig Hard Drive

Actions Toolbar

Refresh - Runs the grid report and updates any changes made to the report.

Reset Layout - Resets any layout changes made to the report to the default setting.

Import - Allows users to import an existing *.xml or *.sprept file to create a new report.

Export - Exports the report data into an Excel file.

Print - Opens a Print Preview window allowing users to print grid report data.

Autorun Report - Determines if the report will automatically update data when it is selected from the Reports Panel.

Note: Design and Edit DataSet functions are only available in Report Manager.

Grid Reports Reference Guide

For a complete list of available XML attributes and tags, please refer to [SalesPad Quick Reports Reference Guide](#).