



AutoStart Setup

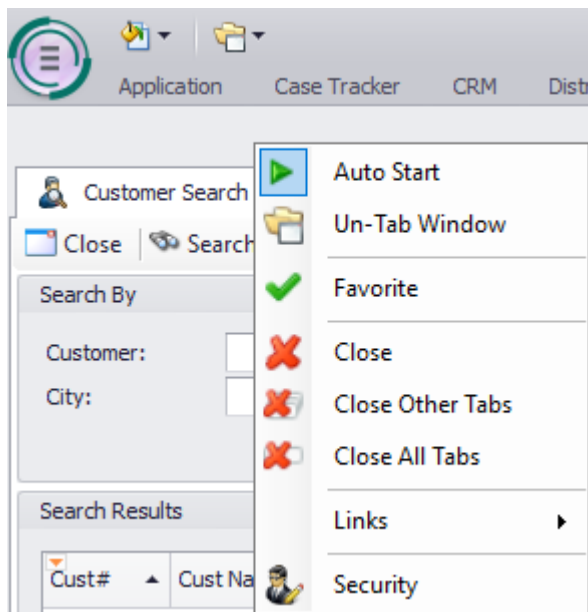
Megan De Freitas - 2024-11-22 - Setup

Overview

The AutoStart feature allows users to choose which tabs start automatically when SalesPad® is opened. It is fully customizable and unique to each user.

Setup

Right--click on an open tab and select **Auto Start** to add that module to AutoStart (select it again to remove the module from AutoStart):



A highlighted play button next to Auto Start indicates that the module will start automatically upon login.