



## Assembly Report

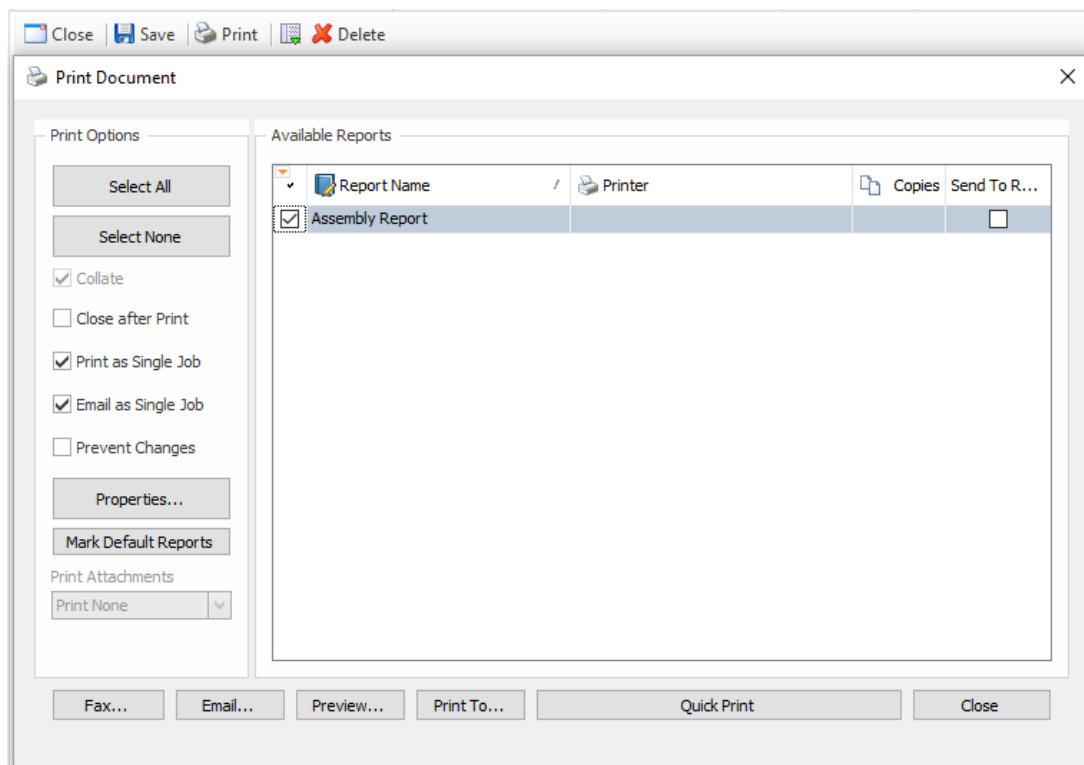
Megan De Freitas - 2025-06-12 - Reporting

### Overview

The *Assembly Report* security setting allows users to see and use the Assembly Report default report. This report can be copied and edited in Report Designer. See the [Reports](#) documentation for more information on this functionality and other default reports.

### Usage

The Assembly Report is used in the Assembly Entry module in SalesPad Desktop. To use the report, press the **Print** button at the top of the page and then select the Assembly Report from the selection screen. For more information, refer to our [BOM and Assembly](#) documentation.



### Security

*Assembly Report* – Allows users to see and use the Assembly Report